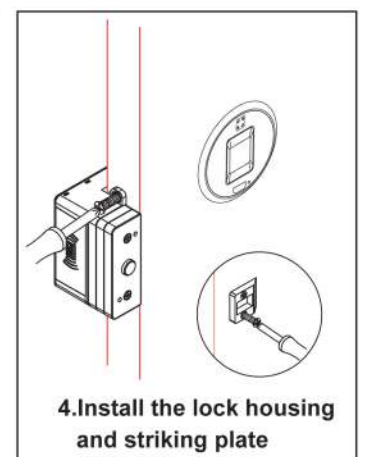
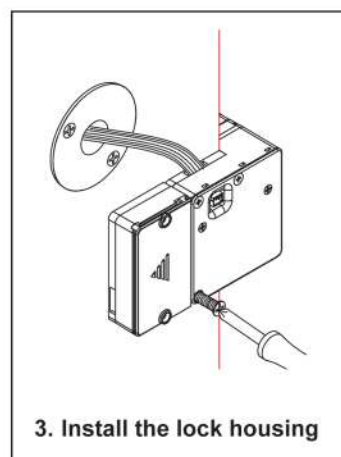
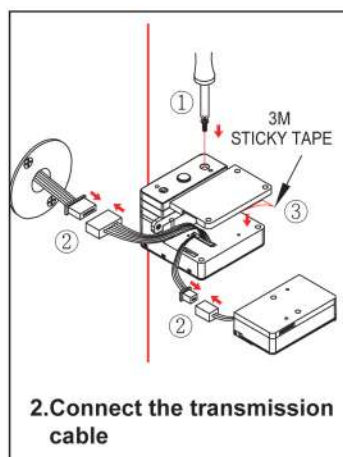
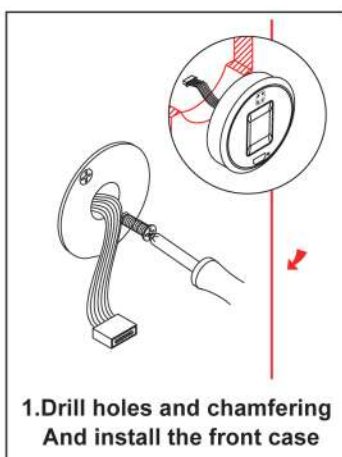
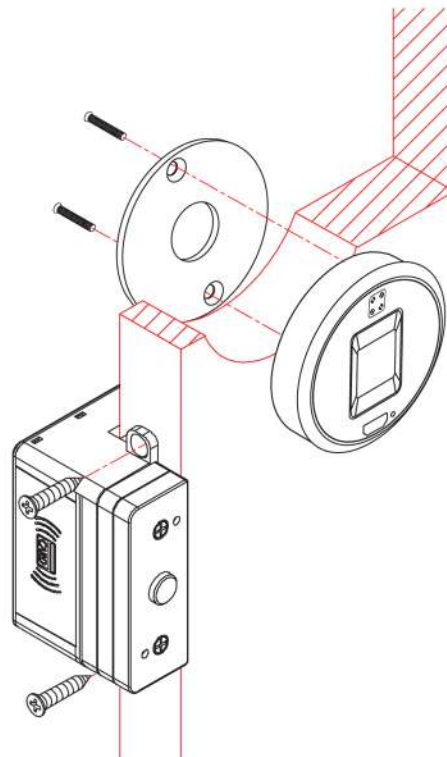
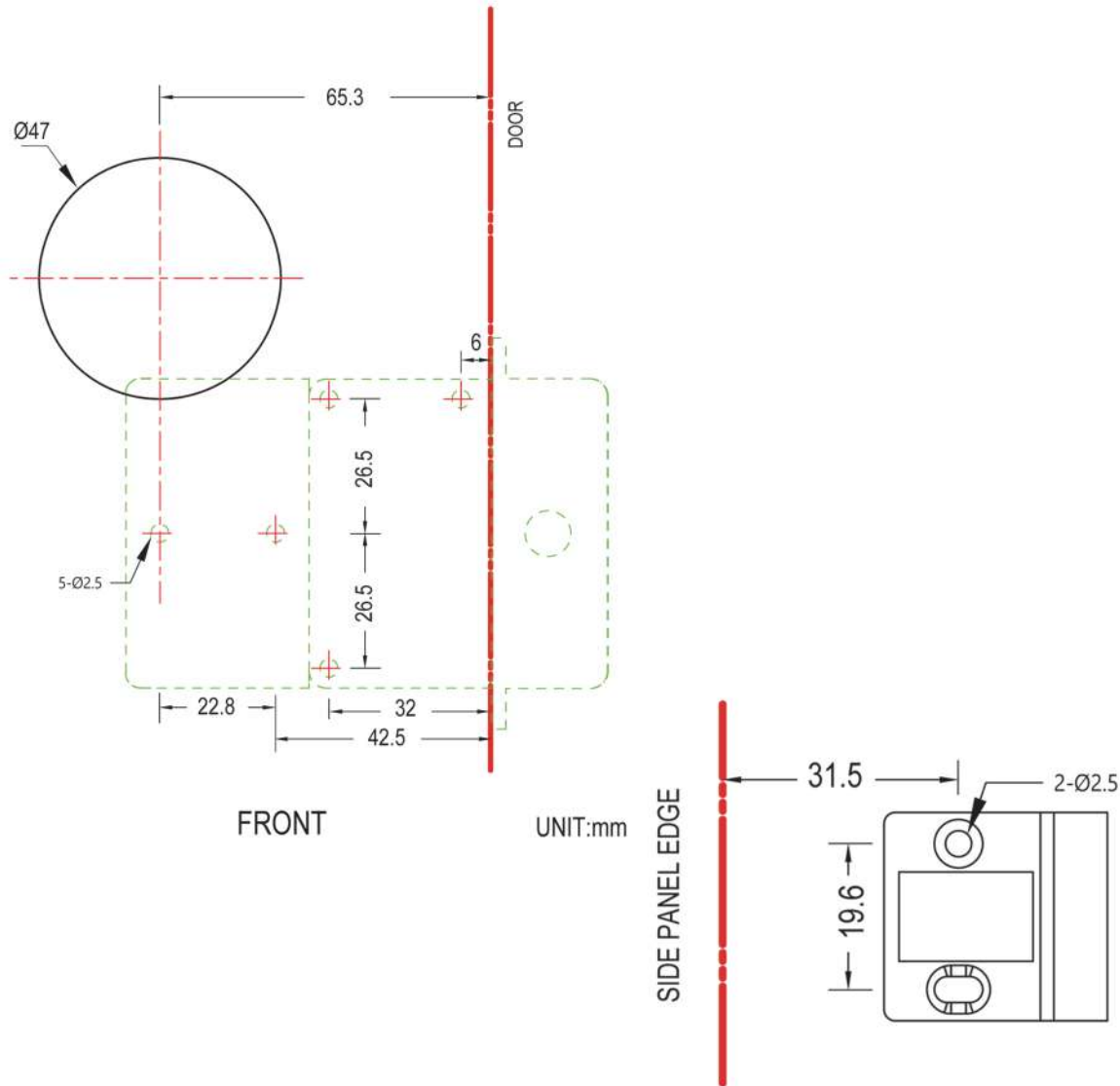


## INSTALLATION DIAGRAM

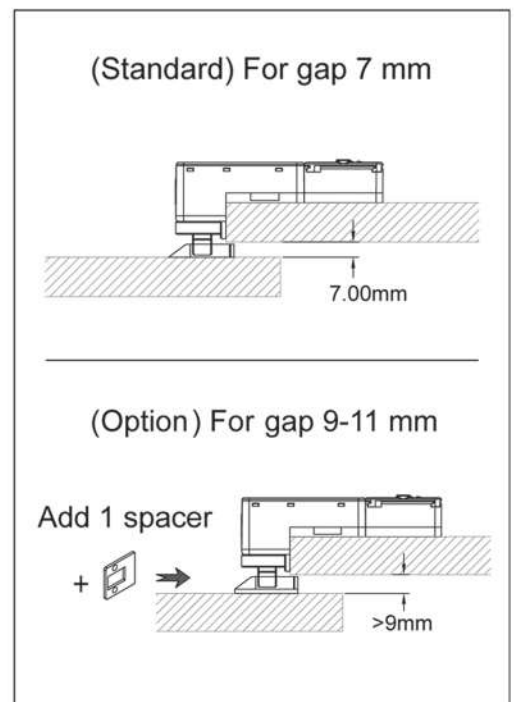
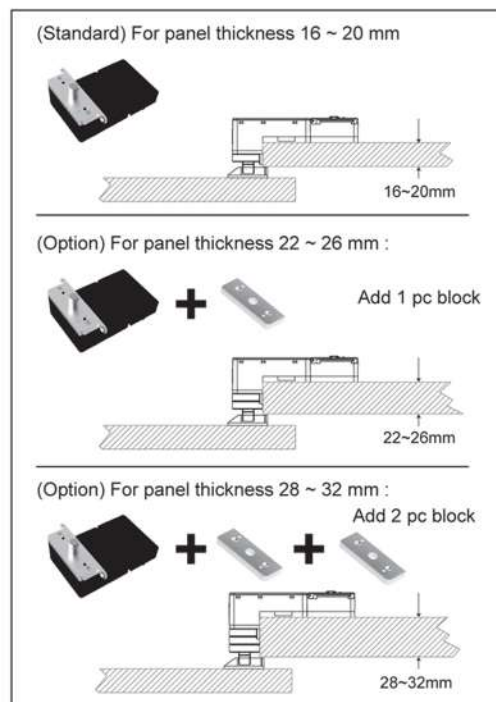
## SDWF-502



# INSTALLATION GUIDE



## ACCESSORIES



# FINGERPRINT LOCK

## PRODUCT SPECIFICATION

Working Current	160mA	Working Voltage	4.5V
Working Temp.	0°C ~ 40°C	Working Humidity	20% ~ 80%

## BUTTON INTRODUCTION

- **BUTTON MODE(A)** : Mode switch button(short press button to switch mode)
- **BUTTON SET(B)** : Set / Delete manager fingerprint



## APPLICATION MODE

- Any fingerprint can lock/unlock the door if there is no any manager fingerprint being stored
- **MANAGER :**
  - \* Lock is able to store 10 manager fingerprints.
  - \* Add, delete or switch manager fingerprint.
  - \* Add or delete user fingerprint..
- **USER :**
  - \* Lock is able to store 10 user fingerprints under auto & manual close mode.
  - \* Only 1 fingerprint can be stored under public mode.

## MODE INTRODUCTION

- **MANUAL-CLOSE MODE ("BEEP" SOUND) :**  
Door will not lock until user scans the fingerprint again.
- **AUTO-CLOSE MODE ("BEEP BEEP" SOUND) :**  
Door will be locked after 6 seconds.
- **PUBLIC MODE ("BEEP BEEP BEEP" SOUND) :**  
Door will keep open until a new user fingerprint set up done. The user fingerprint is deleted when the lock is open with user fingerprint.

## LOW VOLTAGE ALARM

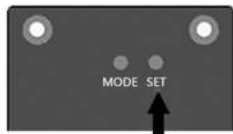


### ⚠ WARNING :

1. PLEASE TEST LOCK IF IT CAN WORK BEFORE CLOSING THE DOOR.
2. PLEASE USE NEW AAA ALKALINE BATTERY.
3. VOLTAGE INPUT CANNOT BE OVER THAN 6V.
4. MAKE SURE YOUR FINGERS ARE CLEAN AND FREE OF WATER OR GREASE. OTHERWISE, THE LOCK CAN NOT READ THE FINGERPRINT CORRECTLY.
5. DO NOT SPRINKLE WATER ON THE LOCK, OTHERWISE THE LOCKS WILL BE DAMAGED AND CAN NOT WORK PROPERLY.

**\*\*Please keep your fingers clean when you use the lock\*\***

## ● SET UP THE FIRST MANAGER FINGERPRINT



Short press  
SET(B) button



Blue light  
flash

Put a finger on the scanner and removes it when you hear a "beep" sound. Identify it 3 times



Pink light on  
Fingerprint setup  
is complete

## ● Add NEW MANAGER FINGERPRINT



Short press  
SET(B) button



"Beep" + Blue light  
flash scan one of the  
valid manager  
fingerprint



"Beep" + Blue and red  
lights flash each other



Put another new finger  
on the scanner and removes  
it when you hear a "beep"  
sound. Identify it 3 times



"Beep" + pink light on  
new manager fingerprint  
set up successful

## ● SWITCH MANAGER FINGERPRINT



Continuous press  
SET(B) button twice



"Beep beep"  
+ Blue light flash  
Scan one of the  
manager fingerprints



Blue and red lights  
flash each other



Put a new manager finger  
on the scanner and removes  
it when you hear a "beep"  
sound. Identify it 3 times



"Beep" + Pink light on.  
New manager fingerprint  
set up successfully  
Original manager finger is  
invalid

## ● DELETE A MANAGER



Continuous press  
SET(B) button 3 times



"Beep beep beep"  
Blue light flash  
Scan the manager  
fingerprint to be deleted



Pink light on + "beep"  
The manager fingerprint  
is removed

## ● MANAGER FINGERPRINT UNLOCK & LOCK



Press the MGR  
fingerprint  
scanner



Beep + blue  
light on



Unlock



Press the MGR  
fingerprint  
scanner



Beep + blue  
light on



Locked

***\*\*Please keep your fingers clean when you use the lock\*\****

### ● ADD USER FINGERPRINT AND LOCK

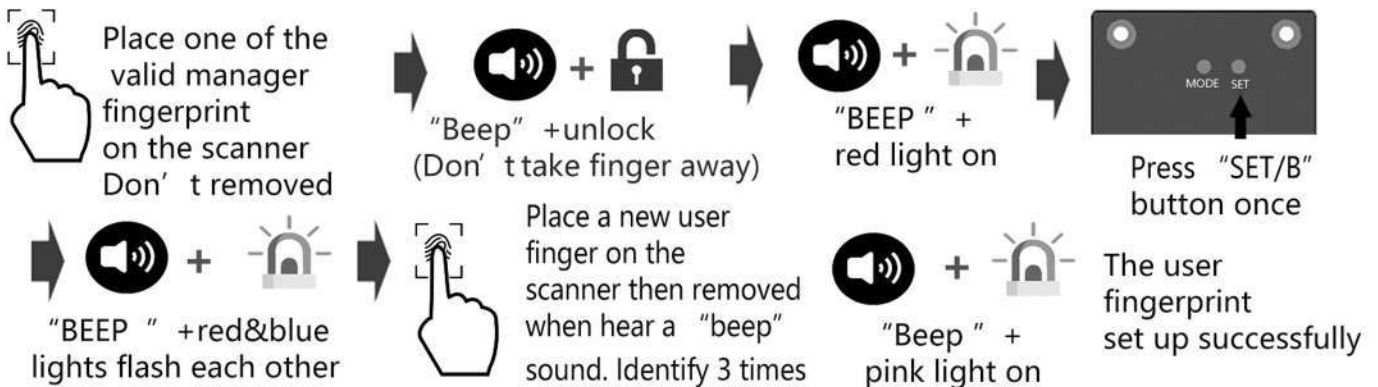


### ● TO UNLOCK

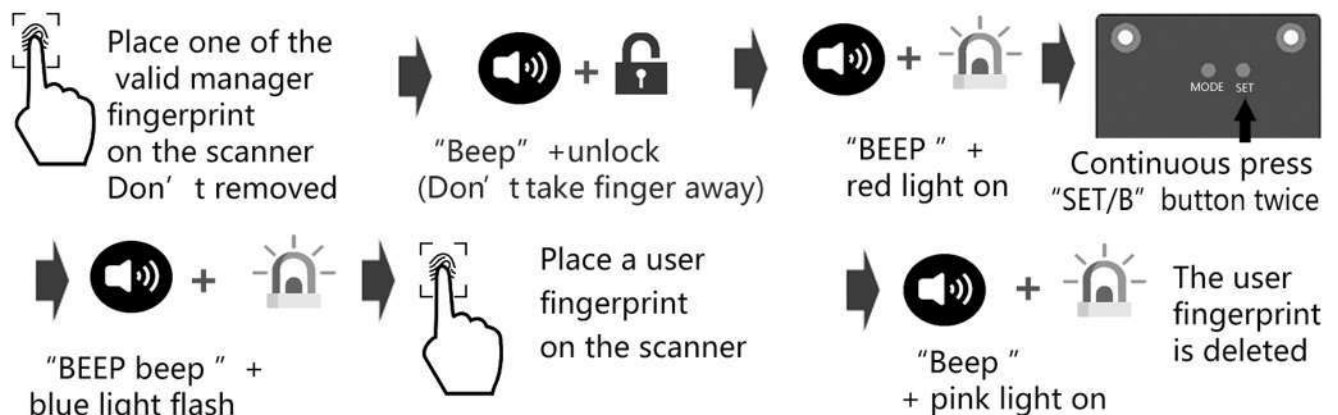


**In public locker mode, User fingerprint is deleted after the door is opened with manager fingerprint**

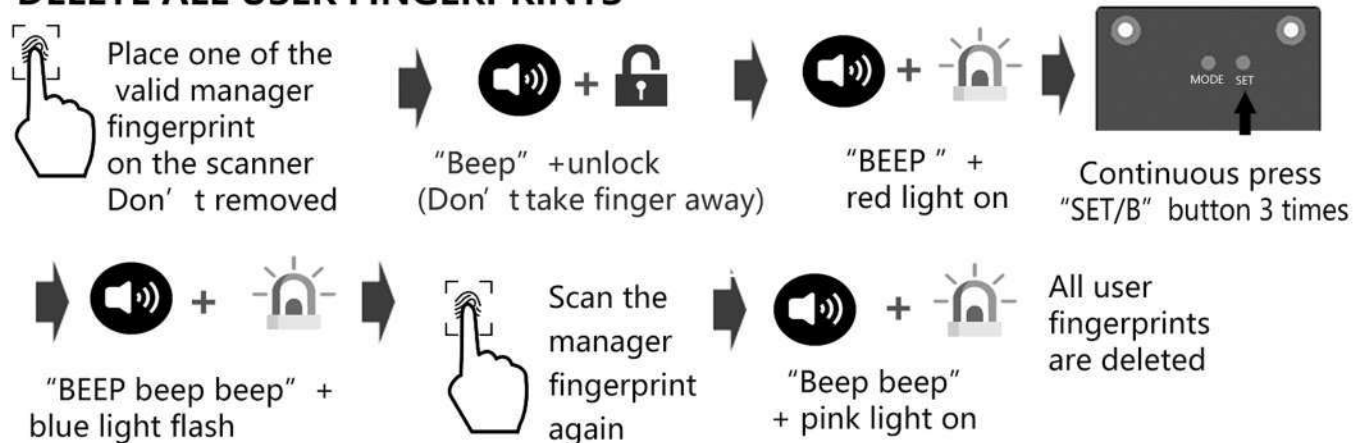
### ● Add USER FINGERPRINT



### ● DELETE INDIVIDUAL USER FINGERPRINT



### ● DELETE ALL USER FINGERPRINTS



### ● MANAGER/USER FINGERPRINT UNLOCK & LOCK

